



103 Linton Road, Loose, Maidstone, Kent, ME15 0AL
Offers In Excess Of £600,000

*****NO FORWARD CHAIN***TAKE THE VIRTUAL TOUR***STUNNING AND EXTENDED CHALET BUNGALOW WITH BEAUTIFUL OPEN PLAN KITCHEN/DINER AND FOUR BEDROOMS**

Located in a convenient position this fabulous family home is within walking distance of the Loose Valley Conservation Area where you are served with picturesque walks through woodlands with babbling brooks, ponds and Crisbrook Meadow. Local amenities include the Chequers Inn pub, Ofsted rated 'Outstanding' Loose Primary School, as well as a Post Office and Sainsburys Local. For the commuter, Staplehurst or Marden Stations are only 10 minute drive away, with frequent services to London Bridge, Waterloo and Charing Cross.

This detached home has been renovated to a high standard and offers spacious accommodation. Inside, there are two bedrooms and a bathroom on the first floor. On the ground floor there is a entrance hall, two double bedrooms with built in wardrobes, a beautiful lounge/diner with log burner, downstairs shower room, useful utility room and a stunning high specification with open plan kitchen/diner leading into a snug area and bi folding doors that open onto the fabulous garden patio. Outside, the driveway to the front provides ample off road parking. To the rear, the garden has been beautifully landscaped with well stocked borders, live hedging and variety of plants and bushes and backs onto fields.

Offered with no forward chain, this fabulous home will generate plenty of interest so do not delay and call Page and Wells Loose Office today and book your viewing to avoid missing out.



GROUND FLOOR

Entrance Hall

Lounge 22'2" x 9'11" (6.77m x 3.04m)

Kitchen/Dining/Family Room 23'9" x 23'7" (7.26m x 7.19m)

Utility Room

Shower Room

Bedroom 3 10'11" x 10'0" (3.33m x 3.05m)

Bedroom 4 10'9" x 10'0" (3.29m x 3.05m)

FIRST FLOOR

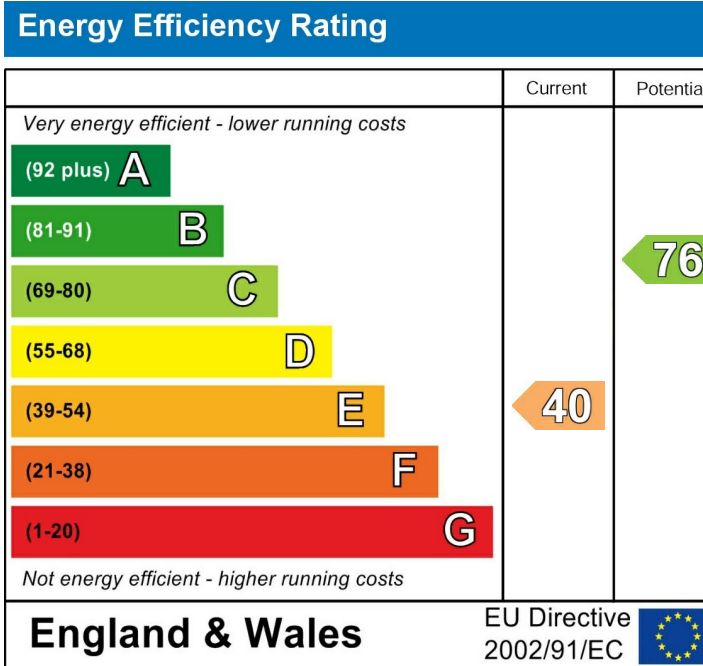
Bedroom 1 14'5" x 10'0" (4.41m x 3.06m)

Bedroom 2 14'0" x 9'8" (4.29m x 2.97m)

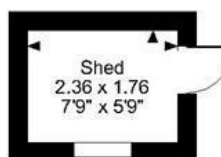
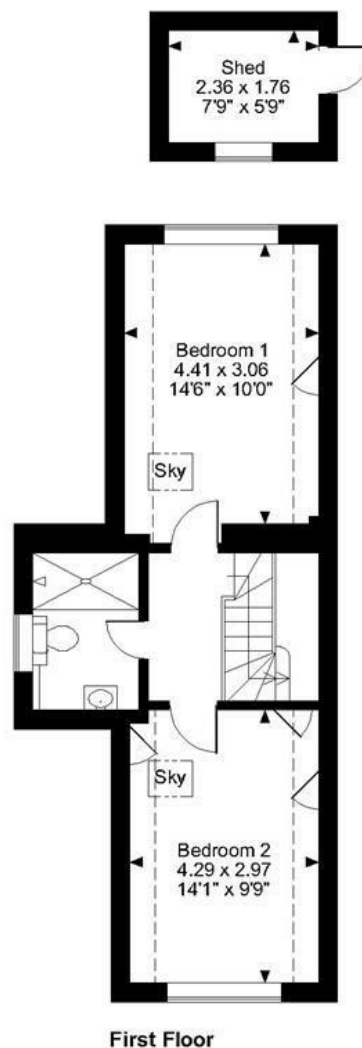
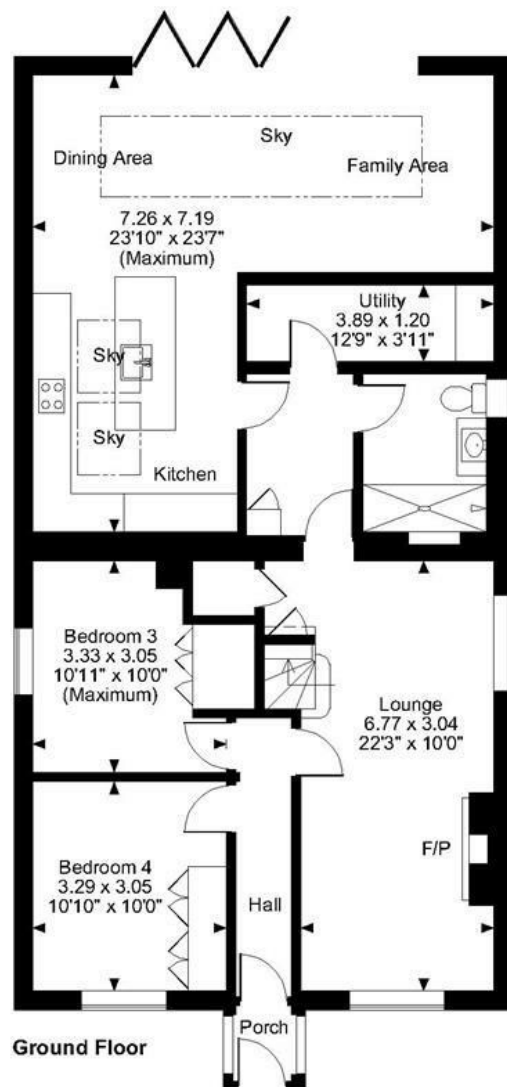
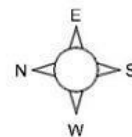
Bathroom

EXTERNALLY

Shed 7'8" x 5'9" (2.36m x 1.76m)



Linton Road Loose, Maidstone
Approximate Gross Internal Area
Main House = 1441 Sq Ft/134 Sq M
Shed = 45 Sq Ft/4 Sq M



FOR ILLUSTRATIVE PURPOSES ONLY - NOT TO SCALE
 The position & size of doors, windows, appliances and other features are approximate only.
 □ □ □ Denotes restricted head height
 © ehouse. Unauthorised reproduction prohibited. Drawing ref. dig/8524610/LCO

